



## Rabbit anti Caspase 7 Polyclonal Antibody

Alternative Name(s): Caspase-7; CASP7; ICE-IAP3; CMH-1; MCH3

### Order Information

- **Description:** Caspase 7
- **Catalogue:** 500-2274
- **Lot:** See label
- **Size:** 100ug/200ul
- **Host:** Rabbit
- **Clone:** nan
- **Application:** IHC(P), WB
- **Reactivity:** Hu

### **ANTIGEN PREPARATION**

A synthetic peptide derived from N-terminus of human Caspase 7 protein.

### **BACKGROUND**

Caspase-7 belongs to a member of the cysteine-aspartic acid protease (Caspase) family. Sequential activation of caspases plays a central role in the execution-phase of cell apoptosis. Caspases exist as inactive proenzymes which undergo proteolytic processing at conserved aspartic residues to produce two subunits, large and small. Those dimerize to form the active enzyme. The precursor of this caspase is cleaved by Caspase 3 and 10. It is activated upon cell death stimuli and induces apoptosis. Caspase-7(CMH-1, Mch3, ICE-LAP3) has been identified as a major contributor to the execution of apoptosis. It is cleaved by many enzymes, including caspases-3, -6, -8, -9 and granzyme B. Once activated, caspase-7 cleaves many of the same substrates as caspase-3, including poly (ADP-ribose) polymerase, or PARP.

### **PURIFICATION**

The Rabbit IgG is purified by Epitope Affinity Purification

### **FORMULATION**

This affinity purified antibody is supplied in sterile Phosphatebuffered saline (pH7.2) containing antibody stabilizer

### **SPECIFICITY**

This antibody recognizes ~35 kDa of human Caspase 7. The other species are not tested.

### **STORAGE**

The antibodies are stable for 24 months from date of receipt when stored at -20oC to -70oC. The antibodies can be stored at 2oC-8oC for three month without detectable loss of activity. Avoid repeated freezing-thawing cycles.

### **APPLICATIONS/SUGGESTED WORKING DILUTIONS\***

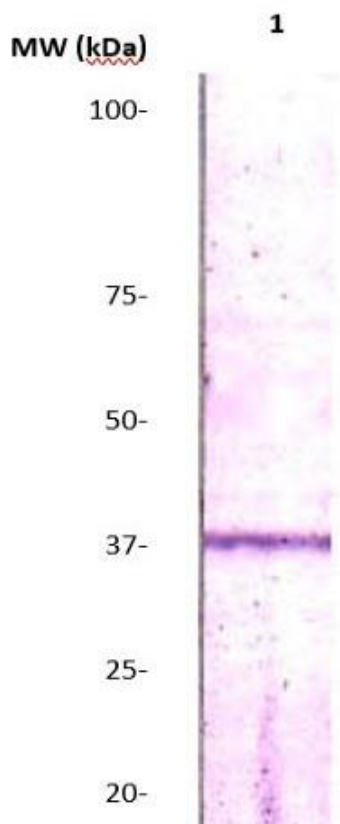
- Western Blot: 0.1-1 µg/ml
- ELISA: 0.01-0.1 µg/ml
- Immunoprecipitation: 2-5 µg/ml
- IHC: 2-10 µg/ml
- Flow cytometry: Not tested
- Molecular Weight: 35.0
- Positive Control: Kidney Tissue
- Cellular Location: Cell Membrane

\*Optimal dilutions should be determined by researchers for the specific applications.

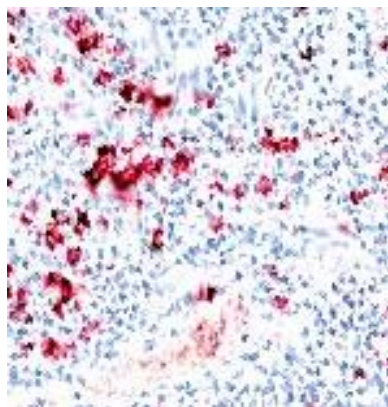
### **FOR RESEARCH USE ONLY.**

AbboMax, Inc 2528 Qume Drive, Suite 8, San Jose, California 95131, USA  
1 408-573-1898 (Tel). 1 408-573-1858 (Fax). [www.abbomax.com](http://www.abbomax.com) [info@abbomax.com](mailto:info@abbomax.com)

## DATA ATTACHMENTS



Western Blot: The cell lysate derived from Jurkat was immunoprobed by Rabbit anti-Caspase-7 (Cat#500-2274) at 1:500. An immunoreactive band is observed around ~35 kDa .



Immunohistochemistry: Human liver tissue stained with Rabbit Anti-Caspase 7 (Cat# 500-2274) at 1:50 for 10 min @ RT. Staining of formalin-fixed tissue requires boiling tissue sections in 10 mM Citrate Buffer, pH 6.0 for 10 min followed by cooling at RT for 20 min.

## REFERENCES

### FOR RESEARCH USE ONLY.

AbboMax, Inc 2528 Qume Drive, Suite 8, San Jose, California 95131, USA  
1 408-573-1898 (Tel). 1 408-573-1858 (Fax). [www.abbomax.com](http://www.abbomax.com) [info@abbomax.com](mailto:info@abbomax.com)